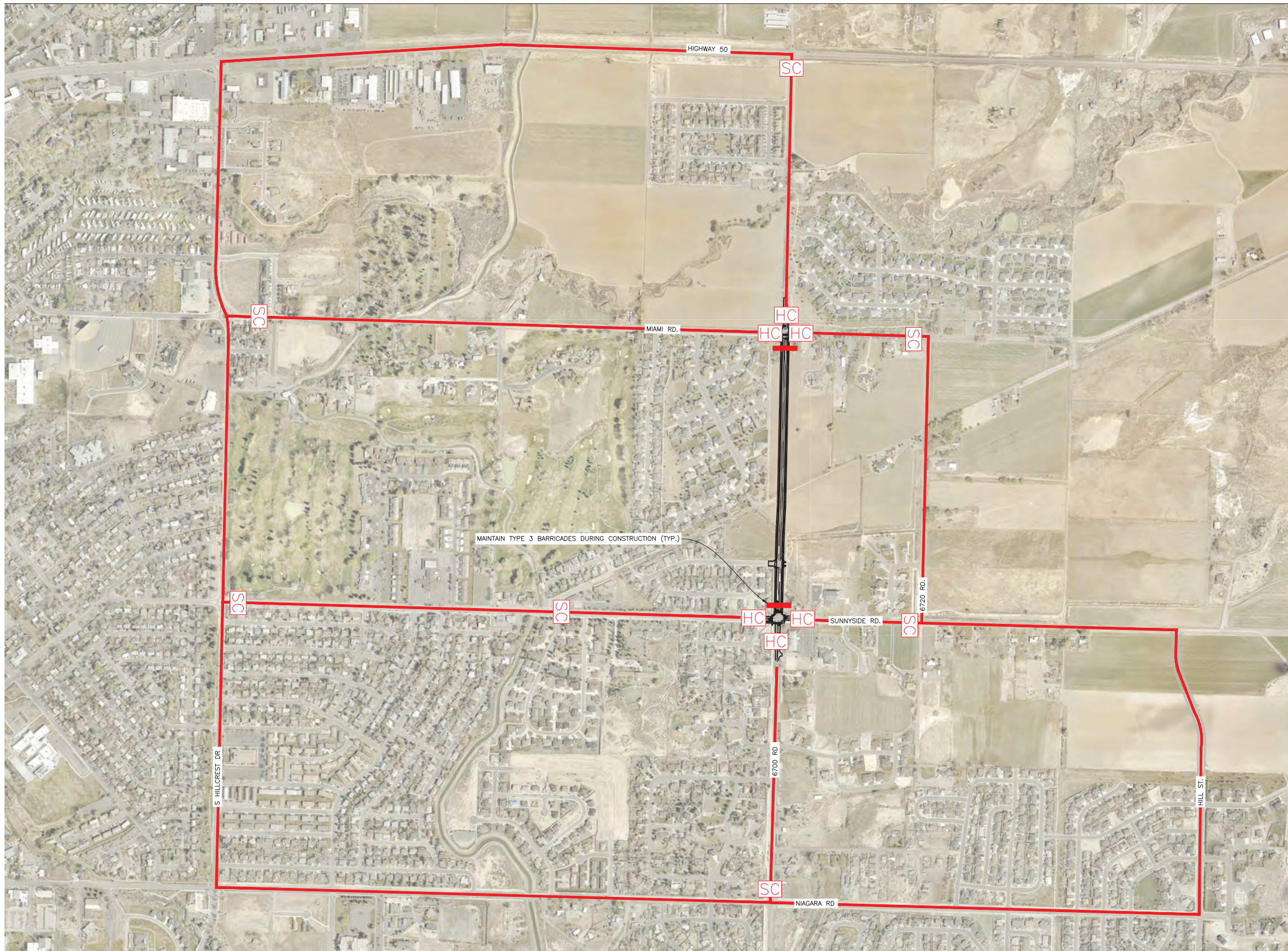


PLOTTED BY BUJUAN, FILE PATH & NAME = \NMS1\PROJECTS\ACTIVE PROJECTS\2022\22082-COM 6700 ROAD EXTENSION\CD\3DSHEETS\22082C_6700RD_TRAFF.DWG, PLOT DATE = 12/22/2022 4:53 PM

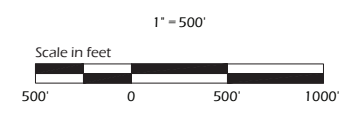


— PROPOSED DETOUR ROUTE OR AS APPROVED BY THE CITY

HC HC — HARD CLOSURE
 "HARD CLOSURES" SHALL INCLUDE TYPE 3 BARRICADES OR WATER BARRIERS ACROSS ROADWAY WITH "ROAD CLOSED" SIGN AS NECESSARY TO CLOSE ROADWAY TO ALL VEHICULAR ACCESS. INCLUDE ADVANCE WARNING SIGNAGE ON APPROACH STREETS AS APPROPRIATE.

SC SC — SOFT CLOSURE
 "SOFT CLOSURES" SHALL INCLUDE CONES AND TYPE 3 BARRICADES ACROSS ROADWAY WITH SINGLE LANE OPENING IN EACH DIRECTION, "ROAD CLOSED AHEAD, LOCAL TRAFFIC ONLY" SIGN, AND DETOUR ARROW WHERE NOTED. INCLUDE ADVANCE WARNING SIGNAGE ON APPROACH STREETS AS APPROPRIATE.

- NOTES**
1. SEE GENERAL NOTES (SHEET 3) FOR ADDITIONAL TRAFFIC CONTROL REQUIREMENTS
 2. PLACE "ROAD CLOSED AHEAD" SIGNAGE AT ALL SIDE STREET CONNECTIONS BETWEEN SOFT AND HARD CLOSURES WHEN IN PLACE.



NO	DATE	REVISIONS	BY

DMC DEL-MONT CONSULTANTS, INC.
 ENGINEERING & SURVEYING
 1212 Colorado Ave., Montrose, CO 81401
 (970) 249-3322 FAX (970) 249-3322

DESIGNED BY: _____ DATE DESIGNED: _____
 CHECKED BY: _____ DATE CHECKED: _____
 SCALE: _____ FILE NAME: _____
 RDD: _____ 2022-12-02
 DWS: _____

CITY OF MONTROSE
 6700 ROAD EXTENSION
 MONTROSE, CO

TRAFFIC CONTROL CONCEPT PLAN

DMC JOB NO.: 22082

SHEET NO.: **4**
 OF 41 SHEETS

FOR BIDDING PURPOSES ONLY
 NOT APPROVED FOR CONSTRUCTION